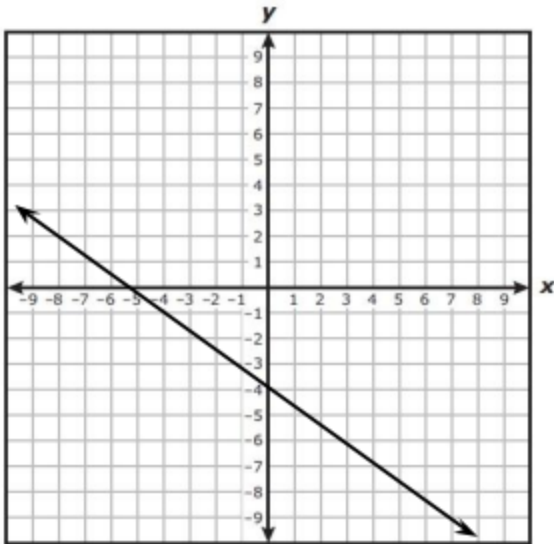


1. What is the positive solution to this equation $2x^2 - 47x = 130$?

Answer : _____

2. The graph of a linear function is shown on the grid:



Which equation is best represented by this graph ?

- A. $y + 2 = \frac{-3}{4}(x - 8)$
 B. $y - 2 = \frac{-3}{4}(x - 8)$
 C. $y + 2 = \frac{-3}{4}(x + 8)$
 D. $y - 2 = \frac{-3}{4}(x + 8)$

3. What is the solution to:
 $-3(4p + 7) = 9(12 - p)$

Answer : _____

4. What is the value of x in the solution to this system of equations?

$$8x - 3y = 24$$

$$y = 6x - 13$$

- F. 4 H. 1.5
 G. -1.5 J. -4

5. Which function is equivalent to

$$y = 4(x - 1)^2 + 12 ?$$

- A. $y = 4x^2 - 8x + 16$
 B. $y = 4x^2 + 16$
 C. $y = 4x^2 - 8x + 8$
 D. $y = 4x^2 - 8$

6. What is the slope of the graph

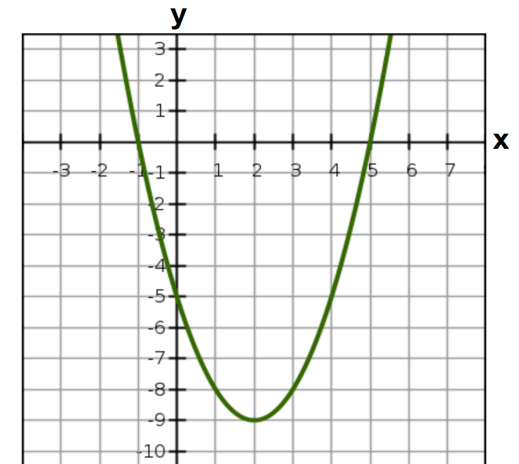
$$y = 7x - 5 ?$$

- F. -5 G. $-\frac{5}{7}$ H. 7 J. $\frac{7}{5}$

7. Which expression is equivalent to $(5 + 8n - 3n^2) - (7n - 6n^2 - 10)$?

- A. $3n^2 - 15n + 15$
 B. $3n^2 + n + 15$
 C. $3n^2 - n + 5$
 D. $3n^2 - 15n - 5$

8. The graph of a quadratic function is shown on the grid:



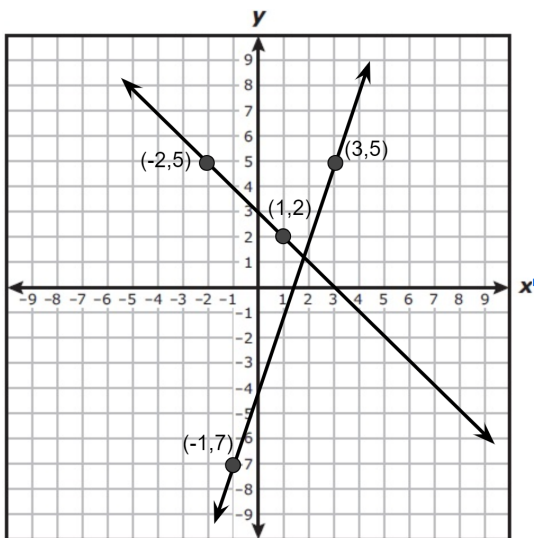
Which function is best represented by this graph

- F. $g(x) = x^2 - 4x - 5$
 G. $g(x) = x^2 + 4x - 5$
 H. $g(x) = x^2 - 4x + 5$
 J. $g(x) = x^2 + 4x + 5$

9. Which value of x makes the equation $1.5(3x - 7) = 7.5$ true?

- A. 4 B. -1 C. 4.5 D. -2.5

10. A system of equations is graphed on the grid



Which system of equations does the graph represent ?

- F. $y = x + 3$ H. $y = -x - 3$
 $y = 3x + 4$ $y = -3x + 4$
- G. $y = -x + 3$ J. $y = x - 3$
 $y = 3x - 4$ $y = -3x - 4$

11. Which function is equivalent to: $h(x) = x^2 - 17x - 60$?

- A. $h(x) = (x - 10)(x - 6)$
 B. $h(x) = (x - 12)(x + 5)$
 C. $h(x) = (x - 20)(x + 3)$
 D. $h(x) = (x - 15)(x + 4)$

12. Which value of x is a solution to this equation $5x^2 + 33x - 56 = 0$?

- A. $x = 8$ C. $x = -1.4$
 B. $x = -8$ D. $x = 1.4$

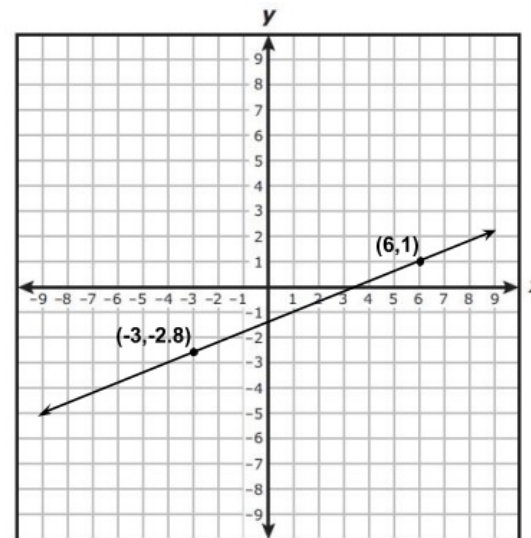
13. Which expression is equivalent to $(xy^3)^5$?

- F. x^5y^{15} H. x^3y^{15}
 G. x^5y^8 J. x^3y^8

14. What is the equation in slope intercept form of a line that passes through points $(-4, 2)$ and $(8, 11)$?

- A. $y = 0.75x + 5$ C. $y = 5x + 3$
 B. $y = 0.75x + 1$ D. $y = 5x - 6$

15. The graph of a linear function is shown on the grid.



What is the rate of change of y with respect to x for this function?

Answer : _____

16. The table shows a linear relationship between x and y .

x	-16	-8	8	24
y	18	15	9	3

What is the rate of change of y with respect to x ? Answer : _____.